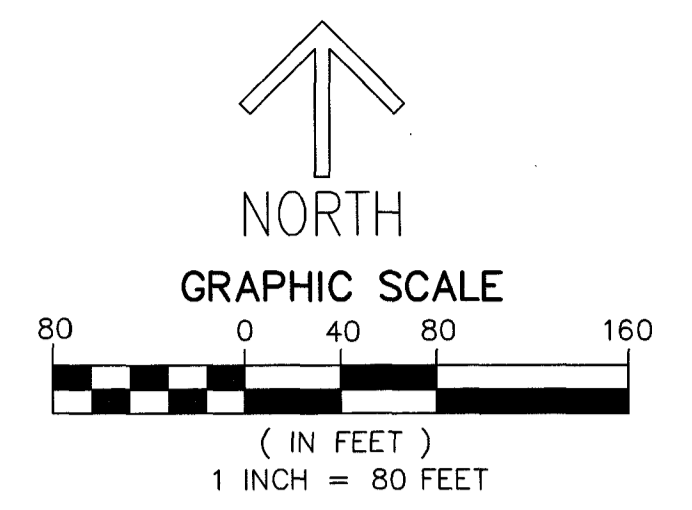


THIS INSTRUMENT PREPARED BY  
DAVID P. LINDLEY  
OF  
**CAULFIELD & WHEELER, INC.**  
SURVEYORS - ENGINEERS - PLANNERS  
7900 GLADES ROAD, SUITE 100  
BOCA RATON, FLORIDA 33434 - (561)392-1991  
CERTIFICATE OF AUTHORIZATION NO. LB3591

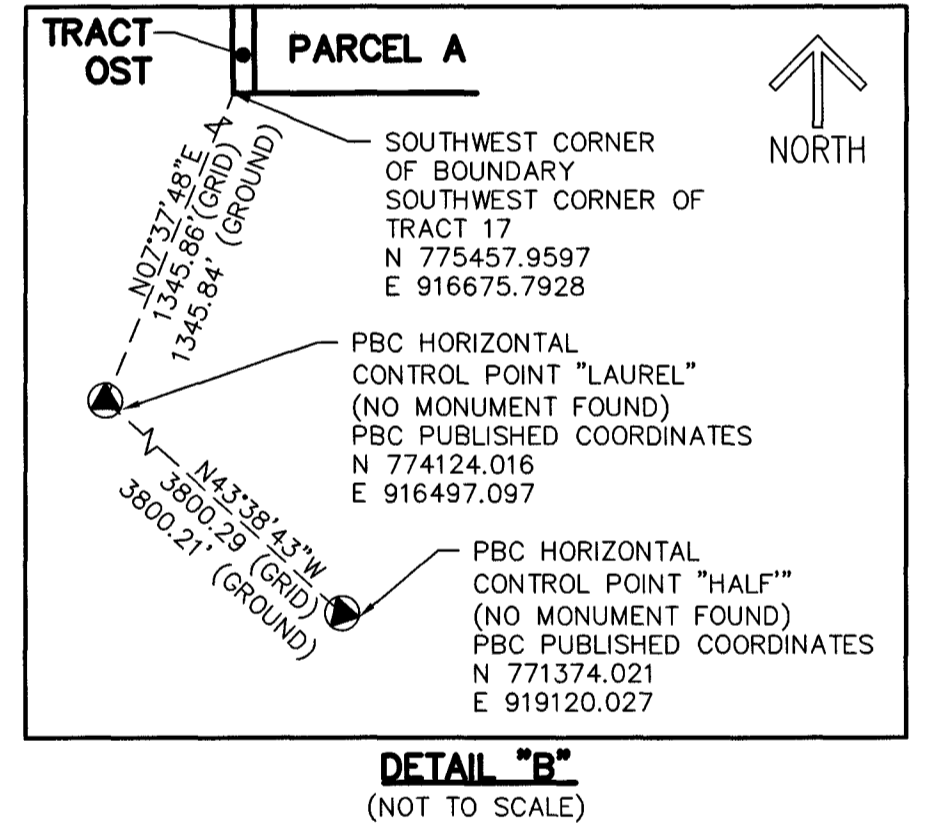
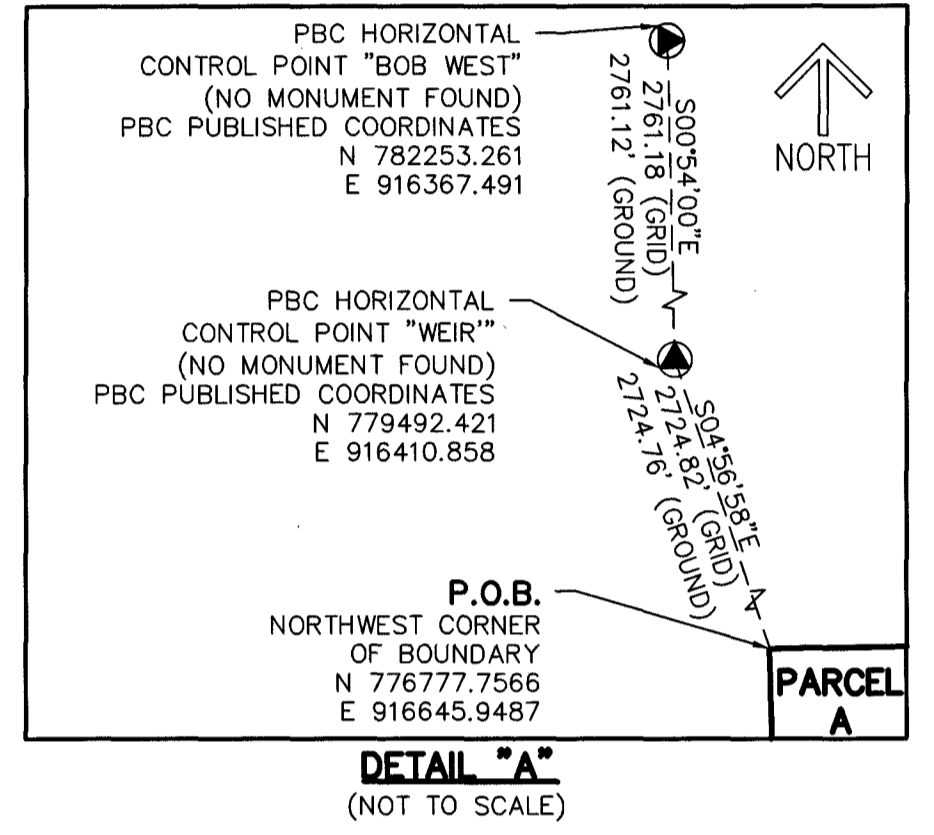
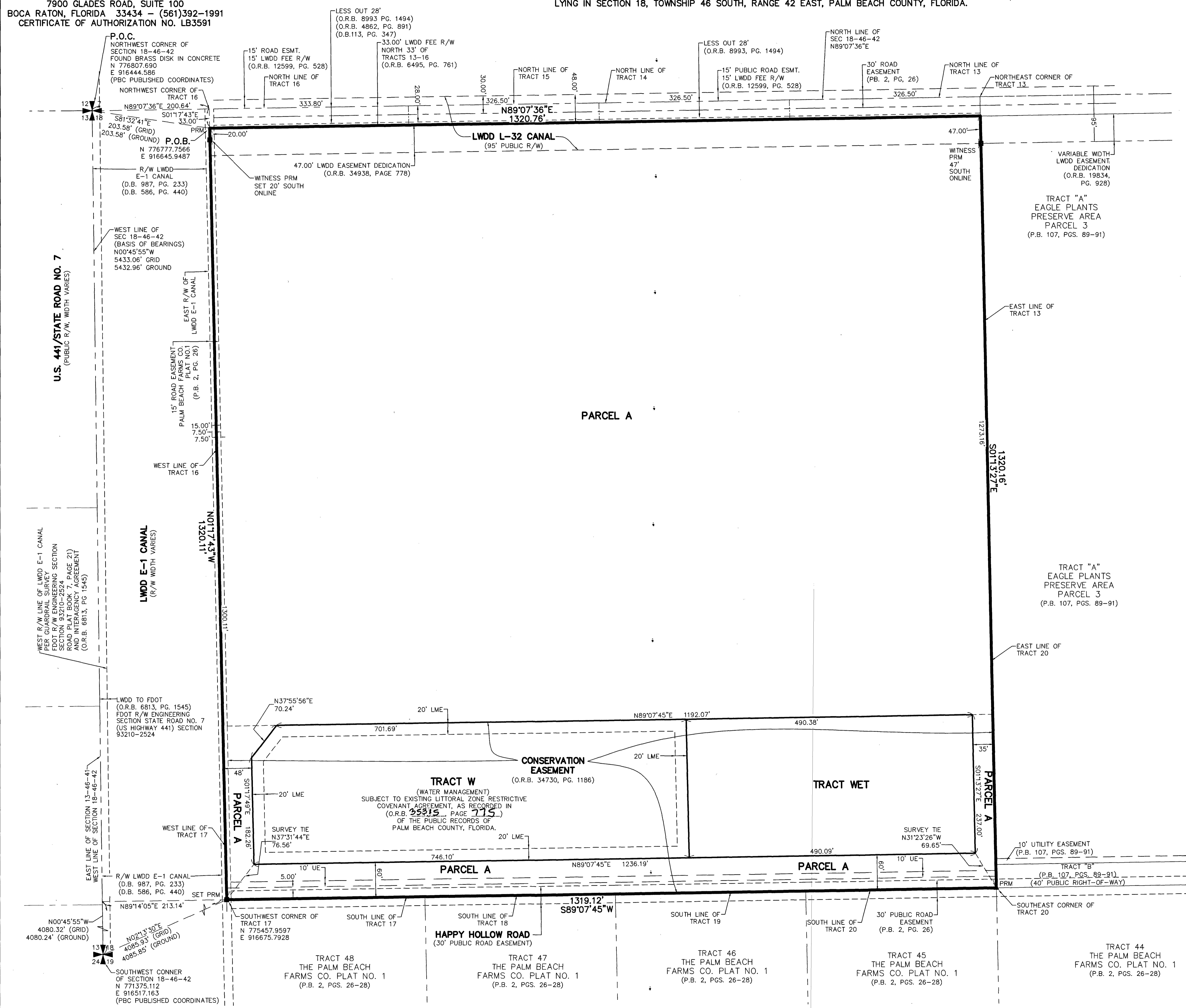
# BBX PARK AT DELRAY MUPD

BEING A REPLAT OF PORTIONS OF TRACTS 13 THROUGH 16, AND ALL OF TRACTS 17 THROUGH 20, THE PALM BEACH FARMS CO. PLAT NO. 1,  
ACCORDING TO THE PLAT THEREOF, AS RECORDED IN PLAT BOOK 2, PAGES 26 THROUGH 28 OF THE PUBLIC RECORDS OF PALM BEACH COUNTY, FLORIDA,  
LYING IN SECTION 18, TOWNSHIP 46 SOUTH, RANGE 42 EAST, PALM BEACH COUNTY, FLORIDA.



# 78

SHEET 2 OF 2



- LEGEND/ABBREVIATIONS:**
- 6 - CENTERLINE
  - P.O.C. - POINT OF COMMENCEMENT
  - P.O.B. - POINT OF BEGINNING
  - N - NORTHING (WHEN USED WITH COORDINATES)
  - E - EASTING (WHEN USED WITH COORDINATES)
  - D.B. - DEED BOOK
  - ESMT. - EASEMENT
  - FDOT - FLORIDA DEPARTMENT OF TRANSPORTATION
  - LB - LICENSED BUSINESS
  - LME - LAKE MAINTENANCE EASEMENT
  - LWDD - LAKE WORTH DRAINAGE DISTRICT
  - MUPD - MIXED USE PLANNED DEVELOPMENT
  - O.R.B. - OFFICIAL RECORD BOOK
  - PBC - PALM BEACH COUNTY
  - P.B. - PLAT BOOK
  - PG. - PAGE
  - R/W - RIGHT-OF-WAY
  - UE - UTILITY EASEMENT
  - 18-46-42 - SECTION 18, TOWNSHIP 46 SOUTH, RANGE 42 EAST
  - PRM - DENOTES FOUND PERMANENT REFERENCE MONUMENT 4" X 4" X 24" CONCRETE MONUMENT WITH ALUMINUM DISK STAMPED "C&W PRM LB#3591" UNLESS OTHERWISE NOTED
  - ▲ - DENOTES SET PERMANENT REFERENCE MONUMENT NAIL AND DISC STAMPED "PRM" LB 3591

**NOTES**  
**COORDINATES, BEARINGS AND DISTANCES**

COORDINATES SHOWN ARE GRID  
DATUM = NAD 83 1990 ADJUSTMENT  
ZONE = FLORIDA EAST  
LINEAR UNIT = U.S. SURVEY FEET  
COORDINATE SYSTEM 1983 STATE PLANE  
TRANSVERSE MERCATOR PROJECTION  
ALL DISTANCES ARE GROUND, UNLESS OTHERWISE NOTED  
SCALE FACTOR = 1.00018851  
GROUND DISTANCE X SCALE FACTOR = GRID DISTANCE